

RPA32 Polyclonal Antibody

Description

Product type	Primary Antibody
Code	BT-AP07985
Host	Rabbit
Isotype	IgG
Size	20ul, 50ul, 100ul
Immunogen	The antiserum was produced against synthesized peptide derived from human RFA2. AA range:10-59
Mol wt	29247
Species reactivity	Human, Mouse,
Clonality	Polyclonal
Recommended application	WB, IHC-p, IF, ELISA
Concentration	1 mg/ml
Full name	RPA32 Antibody
Synonyms	RPA2; REPA2; RPA32; RPA34; Replication protein A 32 kDa subunit; RP-A p32; Replication factor A protein 2; RF-A protein 2; Replication protein A 34 kDa subunit; RP-A p34

This product is for research use only, not for use in human, therapeutic or diagnostic procedure.

Background

RPA2 (Replication Protein A2) is a Protein Coding gene. Diseases associated with RPA2 include xeroderma pigmentosum, group a and ataxia-telangiectasia. Among its related pathways are DNA strand elongation and Fanconi anemia pathway. GO annotations related to this gene include nucleic acid binding and ubiquitin protein ligase binding. An important paralog of this gene is RPA4.

Recommended Dilution

WB: 1: 500 - 1: 2000

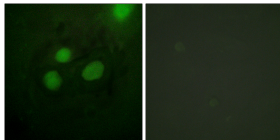
IHC: 1: 100 - 1: 300

IF: 1: 200 - 1: 1000

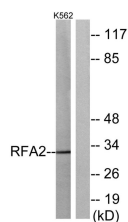
ELISA: 1: 10000

Not yet tested in other applications.

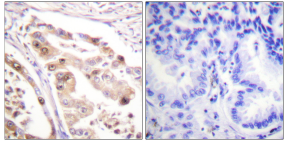
Images



Immunofluorescence analysis of HeLa cells, using RFA2 Antibody. The picture on the right is blocked with the synthesized peptide.



Western blot analysis of lysates from K562 cells, using RFA2 Antibody. The lane on the right is blocked with the synthesized peptide.



Immunohistochemistry analysis of paraffin-embedded human lung carcinoma tissue, using RFA2 Antibody. The picture on the right is blocked with the synthesized peptide.

Storage

-20°C for one year

501 Changsheng S Rd, Nanhu Dist, Jiaxing, Zhejiang, China

Tel: 86 21 31007137 | E-mail: save@bt-laboratory.com | www.bt-laboratory.com