

RPA40 Polyclonal Antibody

Description

| | |
|--------------------------------|--|
| Product type | Primary Antibody |
| Code | BT-AP07986 |
| Host | Rabbit |
| Isotype | IgG |
| Size | 20ul, 50ul, 100ul |
| Immunogen | The antiserum was produced against synthesized peptide derived from human POLR1C. AA range:101-150 |
| Mol wt | 39250 |
| Species reactivity | Human, Mouse |
| Clonality | Polyclonal |
| Recommended application | WB, ELISA |
| Concentration | 1 mg/ml |
| Full name | RPA40 Antibody |
| Synonyms | POLR1C; POLR1E; DNA-directed RNA polymerases I and III subunit RPAC1; DNA-directed RNA polymerase I subunit C; RNA polymerases I and III subunit AC1; AC40; DNA-directed RNA polymerases I and III 40 kD |

This product is for research use only, not for use in human, therapeutic or diagnostic procedure.

Background

The protein encoded by POLR1C (RNA polymerase I subunit C) is a subunit of both RNA polymerase I and RNA polymerase III complexes. The encoded protein is part of the Pol core element. Mutations in POLR1C have been associated with Treacher Collins syndrome (TCS) and hypomyelinating leukodystrophy 11. Alternative splicing results in multiple transcript variants.

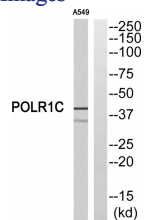
Recommended Dilution

WB: 1: 500 - 1: 2000

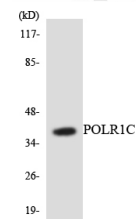
ELISA: 1: 40000

Not yet tested in other applications.

Images



Western blot analysis of POLR1C Antibody. The lane on the right is blocked with the POLR1C peptide.



Western blot analysis of the lysates from HepG2 cells using POLR1C antibody.

Storage

-20°C for one year

501 Changsheng S Rd, Nanhu Dist, Jiaxing, Zhejiang, China

Tel: 86 21 31007137 | E-mail: save@bt-laboratory.com | www.bt-laboratory.com