

Connexin-26 Polyclonal Antibody

Description

Product type	Primary Antibody
Code	BT-AP07988
Host	Rabbit
Isotype	IgG
Size	20ul, 50ul, 100ul
Immunogen	Synthetic Peptide of Connexin-26
Mol wt	N/A
Species reactivity	Human, Mouse
Clonality	Polyclonal
Recommended application	IHC-p, IF
Concentration	1 mg/ml
Full name	Gap junction beta-2 protein
Synonyms	Gap junction beta-2 protein ;Connexin-26;Cx26; GJB2; Gap junction beta-2 protein; Connexin-26; Cx26

This product is for research use only, not for use in human, therapeutic or diagnostic procedure.

Background

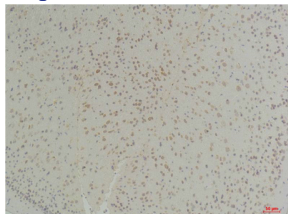
This gene encodes a member of the gap junction protein family. The gap junctions were first characterized by electron microscopy as regionally specialized structures on plasma membranes of contacting adherent cells. These structures were shown to consist of cell-to-cell channels that facilitate the transfer of ions and small molecules between cells. The gap junction proteins, also known as connexins, purified from fractions of enriched gap junctions from different tissues differ. According to sequence similarities at the nucleotide and amino acid levels, the gap junction proteins are divided into two categories, alpha and beta. Mutations in this gene are responsible for as much as 50% of pre-lingual, recessive deafness.

Recommended Dilution

IHC: 1: 100 - 1: 200

Not yet tested in other applications.

Images



Immunohistochemical analysis of paraffin-embedded Mouse Brain Tissue using Connexin-26 Rabbit pAb diluted at 1:200.

Storage

-20°C for 1 year