

SMC1(Phospho Ser966) Polyclonal Antibody

Description

Product type	Primary Antibody
Code	BT-AP08000
Host	Rabbit
Isotype	IgG
Size	20ul, 50ul, 100ul
Immunogen	The antiserum was produced against synthesized peptide derived from human SMC1 around the phosphorylation site of Ser966. AA range:932-981
Mol wt	143233
Species reactivity	Human, Mouse, Rat
Clonality	Polyclonal
Recommended application	WB, IHC-p, IF, ELISA
Concentration	1 mg/ml
Full name	Structural maintenance of chromosomes protein 1A
Synonyms	Structural maintenance of chromosomes protein 1A; SMC1A; DXS423E; KIAA0178; SB1.8; SMC1; SMC1L1; Structural maintenance of chromosomes protein 1A; SMC protein 1A; SMC-1-alpha; SMC-1A; Sb1.8

This product is for research use only, not for use in human, therapeutic or diagnostic procedure.

Background

Proper cohesion of sister chromatids is a prerequisite for the correct segregation of chromosomes during cell division. The cohesin multiprotein complex is required for sister chromatid cohesion. This complex is composed partly of two structural maintenance of chromosomes (SMC) proteins| SMC3 and either SMC1B or the protein encoded by this gene. Most of the cohesin complexes dissociate from the chromosomes before mitosis| although those complexes at the kinetochore remain. Therefore| the encoded protein is thought to be an important part of functional kinetochores. In addition| this protein interacts with BRCA1 and is phosphorylated by ATM| indicating a potential role for this protein in DNA repair. This gene| which belongs to the SMC gene family| is located in an area of the X-chromosome that escapes X inactivation. Mutations in this gene result in Cornelia de Lange syndrome. Altern

Recommended Dilution

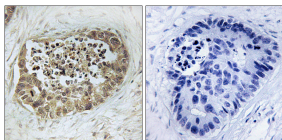
WB: 1: 500 - 1: 2000

IHC-p: 1: 100 - 1: 300

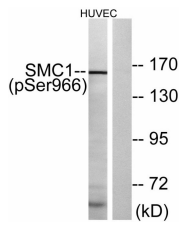
ELISA: 1: 10000

Not yet tested in other applications.

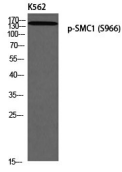
Images



Immunohistochemistry analysis of paraffin-embedded human lung carcinoma, using SMC1 (Phospho-Ser966) Antibody. The picture on the right is blocked with the phospho peptide.



Western blot analysis of K562 using p-SMC1 (S966) antibody.



Western blot analysis of lysates from HUVEC cells treated with etoposide 24uM 24h, using SMC1 (Phospho-Ser966) Antibody. The lane on the right is blocked with the phospho peptide.

Storage

-20°C for 1 year

501 Changsheng S Rd, Nanhu Dist, Jiaxing, Zhejiang, China

Tel: 86 21 31007137 | E-mail: save@bt-laboratory.com | www.bt-laboratory.com