

Cortactin(Phospho Tyr421) Polyclonal Antibody

Description

Product type	Primary Antibody
Code	BT-AP08009
Host	Rabbit
Isotype	IgG
Size	20ul, 50ul, 100ul
Immunogen	The antiserum was produced against synthesized peptide derived from human Cortactin around the phosphorylation site of Tyr421. AA range:388-437
Mol wt	61636
Species reactivity	Human, Mouse, Rat
Clonality	Polyclonal
Recommended application	WB, IHC-p, IF, ELISA
Concentration	1 mg/ml
Full name	Src substrate cortactin
Synonyms	Src substrate cortactin; CTTN; EMS1; Src substrate cortactin; Amplaxin; Oncogene EMS1

This product is for research use only, not for use in human, therapeutic or diagnostic procedure.

Background

This gene is overexpressed in breast cancer and squamous cell carcinomas of the head and neck. The encoded protein is localized in the cytoplasm and in areas of the cell-substratum contacts. This gene has two roles: (1) regulating the interactions between components of adherens-type junctions and (2) organizing the cytoskeleton and cell adhesion structures of epithelia and carcinoma cells. During apoptosis, the encoded protein is degraded in a caspase-dependent manner. The aberrant regulation of this gene contributes to tumor cell invasion and metastasis. Three splice variants that encode different isoforms have been identified for this gene.

Recommended Dilution

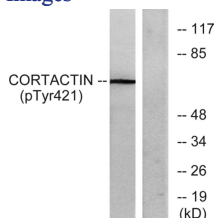
WB: 1: 500 - 1: 2000

IHC-p: 1: 100 - 1: 300

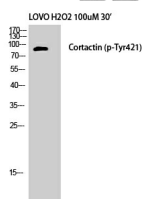
ELISA: 1: 20000

Not yet tested in other applications.

Images



Western Blot analysis of LOVO+H2O2 cells using Phospho-Cortactin (Y421) Polyclonal Antibody



Western blot analysis of lysates from HeLa cells treated with H2O2, using Cortactin (Phospho-Tyr421) Antibody. The lane on the right is blocked with the phospho peptide.

Storage

-20°C for 1 year

501 Changsheng S Rd, Nanhu Dist, Jiaxing, Zhejiang, China

Tel: 86 21 31007137 | E-mail: save@bt-laboratory.com | www.bt-laboratory.com