

CLCA3 Rabbit Polyclonal Antibody

Description

Product type	Primary Antibody
Code	BT-AP08013
Host	Rabbit
Isotype	IgG
Size	20ul, 50ul, 100ul
Immunogen	Synthesized peptide derived from human CLCA3
Mol wt	28820
Species reactivity	Human, Rat, Mouse
Clonality	Polyclonal
Recommended application	WB
Concentration	1 mg/ml
Full name	CLCA3
Synonyms	CLCA3

This product is for research use only, not for use in human, therapeutic or diagnostic procedure.

Background

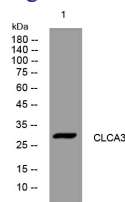
This gene is a transcribed pseudogene belonging to the calcium sensitive chloride conductance protein family. To date| all members of this gene family map to the same site on chromosome 1p31-p22 and share high degrees of homology in size| sequence and predicted structure| but differ significantly in their tissue distributions. This gene contains several nonsense codons compared to other family members that render the transcript a candidate for nonsense-mediated mRNA decay (NMD). Therefore| this gene is unlikely to be protein-coding.

Recommended Dilution

WB: 1: 500 - 1: 2000

Not yet tested in other applications.

Images



Western blot analysis of lysates from U2OS cells, primary antibody was diluted at 1:1000, 4°C overnight

Storage

-20°C for 1 year