

RRS1 Polyclonal Antibody

Description

Product type	Primary Antibody
Code	BT-AP08020
Host	Rabbit
Isotype	IgG
Size	20ul, 50ul, 100ul
Immunogen	The antiserum was produced against synthesized peptide derived from human RRS1. AA range:254-303
Mol wt	41193
Species reactivity	Human, Mouse, Rat
Clonality	Polyclonal
Recommended application	WB, IHC-p, ELISA
Concentration	1 mg/ml
Full name	RRS1 Antibody
Synonyms	RRS1; KIAA0112; RRR; Ribosome biogenesis regulatory protein homolog

This product is for research use only, not for use in human, therapeutic or diagnostic procedure.

Background

RRS1 (Ribosome Biogenesis Regulator Homolog) is a Protein Coding gene. Gene Ontology (GO) annotations related to this gene include poly(A) RNA binding. Involved in ribosome biogenesis.

Recommended Dilution

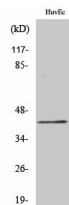
WB: 1: 500 - 1: 2000

IHC: 1: 100 - 1: 300

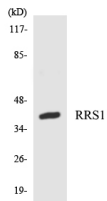
ELISA: 1: 10000

Not yet tested in other applications.

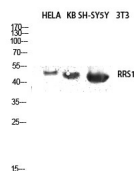
Images



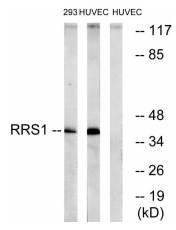
Western Blot analysis of various cells using RRS1 Polyclonal Antibody diluted at 1:2000 cells nucleus.



Western blot analysis of the lysates from HT-29 cells using RRS1 antibody.



Western blot analysis of HELA KB SH-SY5Y lysis using RRS1 antibody. Antibody was diluted at 1:2000 cells nucleus.



Western blot analysis of lysates from HUVEC and 293 cells, using RRS1 Antibody. The lane on the right is blocked with the synthesized peptide.

Storage

-20°C for one year

501 Changsheng S Rd, Nanhu Dist, Jiaxing, Zhejiang, China

Tel: 86 21 31007137 | E-mail: save@bt-laboratory.com | www.bt-laboratory.com