

## CLD24 Rabbit Polyclonal Antibody

### Description

Product type	Primary Antibody
Code	BT-AP08026
Host	Rabbit
Isotype	IgG
Size	20ul, 50ul, 100ul
Immunogen	Synthesized peptide derived from human CLD24
Mol wt	22550
Species reactivity	Human, Rat, Mouse
Clonality	Polyclonal
Recommended application	WB
Concentration	1 mg/ml
Full name	CLD24
Synonyms	CLD24

This product is for research use only, not for use in human, therapeutic or diagnostic procedure.

### Background

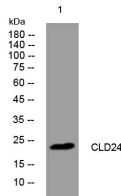
This gene encodes a member of the claudin family. Claudins are integral membrane proteins and components of tight junction strands. Tight junction strands serve as a physical barrier to prevent solutes and water from passing freely through the paracellular space between epithelial or endothelial cell sheets| and also play critical roles in maintaining cell polarity and signal transductions. The protein encoded by this gene is 75% identical to the mouse homolog. This gene is upstream of the CLDN22 gene| which overlaps the WWC2 gene on the opposite strand in the genome.

### Recommended Dilution

WB: 1: 500 - 1: 2000

Not yet tested in other applications.

### Images



Western blot analysis of lysates from AD293 cells, primary antibody was diluted at 1:1000, 4°C overnight

### Storage

-20°C for 1 year