

Rsk-3 Polyclonal Antibody

Description

Product type	Primary Antibody
Code	BT-AP08037
Host	Rabbit
Isotype	IgG
Size	20ul, 50ul, 100ul
Immunogen	The antiserum was produced against synthesized peptide derived from human S6K-alpha2. AA range:241-290
Mol wt	83239
Species reactivity	Human, Mouse
Clonality	Polyclonal
Recommended application	IHC-p, ELISA
Concentration	1 mg/ml
Full name	Rsk-3 Antibody
Synonyms	RPS6KA2; MAPKAPK1C; RSK3; Ribosomal protein S6 kinase alpha-2; S6K-alpha-2; 90 kDa ribosomal protein S6 kinase 2; p90-RSK 2; p90RSK2; MAP kinase-activated protein kinase 1c; MAPK-activated protein kin

This product is for research use only, not for use in human, therapeutic or diagnostic procedure.

Background

RPS6KA2 (ribosomal protein S6 kinase A2) encodes a member of the RSK (ribosomal S6 kinase) family of serine/threonine kinases. This kinase contains two non-identical kinase catalytic domains and phosphorylates various substrates, including members of the mitogen-activated kinase (MAPK) signalling pathway. The activity of this protein has been implicated in controlling cell growth and differentiation. Alternative splice variants, encoding different isoforms, have been characterized.

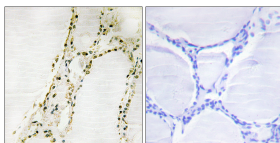
Recommended Dilution

IHC: 1: 100 - 1: 300

ELISA: 1: 20000

Not yet tested in other applications.

Images



Immunohistochemistry analysis of paraffin-embedded human thyroid gland tissue, using S6K-alpha2 Antibody. The picture on the right is blocked with the synthesized peptide.

Storage

-20°C for one year