

Rsk-4 Polyclonal Antibody

Description

Product type	Primary Antibody
Code	BT-AP08038
Host	Rabbit
Isotype	IgG
Size	20ul, 50ul, 100ul
Immunogen	The antiserum was produced against synthesized peptide derived from human S6K-alpha6. AA range:661-710
Mol wt	83872
Species reactivity	Human
Clonality	Polyclonal
Recommended application	WB, IHC-p, ELISA
Concentration	1 mg/ml
Full name	Rsk-4 Antibody
Synonyms	RPS6KA6; RSK4; Ribosomal protein S6 kinase alpha-6; S6K-alpha-6; 90 kDa ribosomal protein S6 kinase 6; p90-RSK 6; p90RSK6; Ribosomal S6 kinase 4; RSK-4; pp90RSK4

This product is for research use only, not for use in human, therapeutic or diagnostic procedure.

Background

RPS6KA6 encodes a member of ribosomal S6 kinase family, serine-threonine protein kinases which are regulated by growth factors. The Ribosomal protein S6 kinase alpha-6 may be distinct from other members of this family, however, as studies suggest it is not growth factor dependent and may not participate in the same signaling pathways.

Recommended Dilution

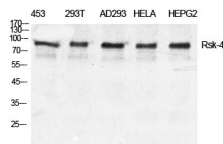
WB: 1: 500 - 1: 2000

IHC: 1: 100 - 1: 300

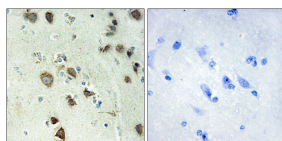
ELISA: 1: 10000

Not yet tested in other applications.

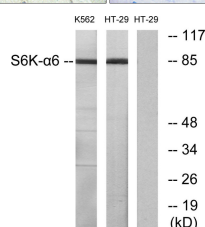
Images



Western Blot analysis of various cells using Rsk-4 Polyclonal Antibody diluted at 1:500



Immunohistochemistry analysis of paraffin-embedded human brain tissue, using S6K-alpha6 Antibody. The picture on the right is blocked with the synthesized peptide.



Western blot analysis of lysates from K562 and HT-29 cells, using S6K-alpha6 Antibody. The lane on the right is blocked with the synthesized peptide.

Storage

-20°C for one year

501 Changsheng S Rd, Nanhu Dist, Jiaxing, Zhejiang, China

Tel: 86 21 31007137 | E-mail: save@bt-laboratory.com | www.bt-laboratory.com