

Rsu-1 Polyclonal Antibody

Description

Product type	Primary Antibody
Code	BT-AP08042
Host	Rabbit
Isotype	IgG
Size	20ul, 50ul, 100ul
Immunogen	The antiserum was produced against synthesized peptide derived from human RSU1. AA range:187-236
Mol wt	31540
Species reactivity	Human, Mouse
Clonality	Polyclonal
Recommended application	WB, ELISA
Concentration	1 mg/ml
Full name	Rsu-1 Antibody
Synonyms	RSU1; RSP1; Ras suppressor protein 1; RSP-1; Rsu-1

This product is for research use only, not for use in human, therapeutic or diagnostic procedure.

Background

RSU1 (Ras suppressor protein 1) encodes a protein that is involved in the Ras signal transduction pathway, growth inhibition, and nerve-growth factor induced differentiation processes, as determined in mouse and human cell line studies. In mouse, the encoded protein was initially isolated based on its ability to inhibit v-Ras transformation. Multiple alternatively spliced transcript variants for RSU1 have been reported; one of these variants was found only in glioma tumors.

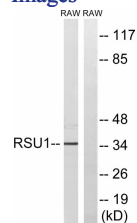
Recommended Dilution

WB: 1: 500 - 1: 2000

ELISA: 1: 20000

Not yet tested in other applications.

Images



Western blot analysis of lysates from RAW264.7 cells, using RSU1 Antibody. The lane on the right is blocked with the synthesized peptide.

Storage

-20°C for one year