

RTCD1 Polyclonal Antibody

Description

Product type	Primary Antibody
Code	BT-AP08051
Host	Rabbit
Isotype	IgG
Size	20ul, 50ul, 100ul
Immunogen	The antiserum was produced against synthesized peptide derived from human RTCD1. AA range:317-366
Mol wt	39337
Species reactivity	Human
Clonality	Polyclonal
Recommended application	WB, IHC-p, ELISA
Concentration	1 mg/ml
Full name	RTCD1 Antibody
Synonyms	RTCA; RPC; RPC1; RTC1; RTCD1; RNA 3'-terminal phosphate cyclase; RNA cyclase; RNA-3'-phosphate cyclase; RNA terminal phosphate cyclase domain-containing protein 1; RTC domain-containing protein 1

This product is for research use only, not for use in human, therapeutic or diagnostic procedure.

Background

RTCA (RNA 3'-terminal phosphate cyclase) encodes a member of the RNA 3'-phosphate cyclase family. The encoded protein plays a role in RNA metabolism by catalyzing the ATP-dependent conversion of the 3'-phosphate of RNA substrates to a 2',3'-cyclic phosphodiester. Alternatively spliced transcript variants encoding multiple isoforms have been observed for RTCA.

Recommended Dilution

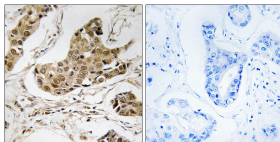
WB: 1: 500 - 1: 2000

IHC: 1: 100 - 1: 300

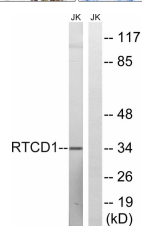
ELISA: 1: 5000

Not yet tested in other applications.

Images



Immunohistochemistry analysis of paraffin-embedded human breast carcinoma tissue, using RTCD1 Antibody. The picture on the right is blocked with the synthesized peptide.



Western blot analysis of lysates from Jurkat cells, using RTCD1 Antibody. The lane on the right is blocked with the synthesized peptide.

Storage

-20°C for one year

501 Changsheng S Rd, Nanhu Dist, Jiaxing, Zhejiang, China

Tel: 86 21 31007137 | E-mail: save@bt-laboratory.com | www.bt-laboratory.com