

CLLU1 Rabbit Polyclonal Antibody

Description

Product type	Primary Antibody
Code	BT-AP08052
Host	Rabbit
Isotype	IgG
Size	20ul, 50ul, 100ul
Immunogen	Synthesized peptide derived from human CLLU1
Mol wt	13310
Species reactivity	Human, Rat, Mouse
Clonality	Polyclonal
Recommended application	WB
Concentration	1 mg/ml
Full name	CLLU1
Synonyms	CLLU1

This product is for research use only, not for use in human, therapeutic or diagnostic procedure.

Background

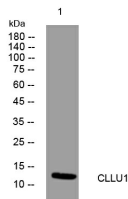
The protein encoded by this gene is overexpressed in chronic lymphocytic leukemia (CLL) and serves as a good prognostic marker for the disease. Methylation of certain genes| including this one| have been associated with CLL. This gene is protein-coding in humans and non-protein coding in other primates. Three transcript variants| one protein-coding and the other two non-protein coding| have been found for this gene.

Recommended Dilution

WB: 1: 500 - 1: 2000

Not yet tested in other applications.

Images



Western blot analysis of lysates from 3T3 cells, primary antibody was diluted at 1:1000, 4°C overnight

Storage

-20°C for 1 year