

RUFY1 Polyclonal Antibody

Description

Product type	Primary Antibody
Code	BT-AP08056
Host	Rabbit
Isotype	IgG
Size	20ul, 50ul, 100ul
Immunogen	The antiserum was produced against synthesized peptide derived from human RUFY1. AA range:139-188
Mol wt	79818
Species reactivity	Human, Mouse
Clonality	Polyclonal
Recommended application	WB, ELISA
Concentration	1 mg/ml
Full name	RUFY1 Antibody
Synonyms	RUFY1; RABIP4; ZFYVE12; RUN and FYVE domain-containing protein 1; FYVE-finger protein EIP1; La-binding protein 1; Rab4-interacting protein; Zinc finger FYVE domain-containing protein 12

This product is for research use only, not for use in human, therapeutic or diagnostic procedure.

Background

RUFY1 (RUN and FYVE domain containing 1) encodes a protein that contains a RUN domain and a FYVE-type zinc finger domain. The encoded protein binds to phosphatidylinositol-3-phosphate (PI3P) and plays a role in early endosomal trafficking, tethering and fusion through interactions with small GTPases including Rab4, Rab5 and Rab14. Alternatively spliced transcript variants encoding multiple isoforms have been observed for RUFY1.

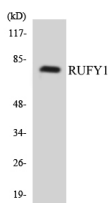
Recommended Dilution

WB: 1: 500 - 1: 2000

ELISA: 1: 10000

Not yet tested in other applications.

Images



Western blot analysis of the lysates from HUVEC cells using RUFY1 antibody.

Storage

-20°C for one year