

RUNX2 Polyclonal Antibody

Description

Product type	Primary Antibody
Code	BT-AP08061
Host	Rabbit
Isotype	IgG
Size	20ul, 50ul, 100ul
Immunogen	The antiserum was produced against synthesized peptide derived from the Internal region of human RUNX2. AA range:201-250
Mol wt	56648
Species reactivity	Human, Mouse, Rat
Clonality	Polyclonal
Recommended application	IF, WB, ELISA
Concentration	1 mg/ml
Full name	RUNX2 Antibody
Synonyms	RUNX2; AML3; CBFA1; OSF2; PEBP2A; Runt-related transcription factor 2; Acute myeloid leukemia 3 protein; Core-binding factor subunit alpha-1; CBF-alpha-1; Oncogene AML-3Osteoblast-specific transcript

This product is for research use only, not for use in human, therapeutic or diagnostic procedure.

Background

RUNX2 is a member of the RUNX family of transcription factors and encodes a nuclear protein with an Runt DNA-binding domain. Runt-related transcription factor 2 is essential for osteoblastic differentiation and skeletal morphogenesis and acts as a scaffold for nucleic acids and regulatory factors involved in skeletal gene expression. The protein can bind DNA both as a monomer or, with more affinity, as a subunit of a heterodimeric complex. Two regions of potential trinucleotide repeat expansions are present in the N-terminal region of the encoded protein, and these and other mutations in this gene have been associated with the bone development disorder cleidocranial dysplasia (CCD). Transcript variants that encode different protein isoforms result from the use of alternate promoters as well as alternate splicing.

Recommended Dilution

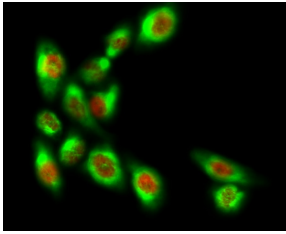
WB: 1: 500 - 1: 2000

ELISA: 1: 20000

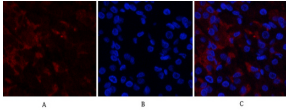
IF: 1: 50 - 200

Not yet tested in other applications.

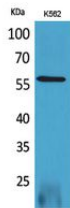
Images



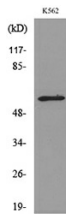
Immunofluorescence analysis of HeLa cell. 1,RUNX2 Polyclonal Antibody(red) was diluted at 1:200(4° overnight). 2, NSE Monoclonal Antibody(13E2)(green) was diluted at 1:200(4° overnight). 2, Goat Anti Rabbit Alexa Fluor 594 was diluted at 1:1000(room temperature, 50min). Goat Anti Mouse Alexa Fluor 488 was diluted at 1:1000(room temperature, 50min).



Immunofluorescence analysis of human-stomach tissue. 1,RUNX2 Polyclonal Antibody(red) was diluted at 1:200(4°C,overnight). 2, Cy3 labeled Secondary antibody was diluted at 1:300(room temperature, 50min).3, Picture B: DAPI(blue) 10min. Picture A:Target. Picture B: DAPI. Picture C: merge of A+B



Western Blot analysis of K562 cells using RUNX2 Polyclonal Antibody. Secondary antibody was diluted at 1:20000



Western blot analysis of lysate from K562 cells, using RUNX2 Antibody.

Storage

-20°C for one year

501 Changsheng S Rd, Nanhu Dist, Jiaxing, Zhejiang, China

Tel: 86 21 31007137 | E-mail: save@bt-laboratory.com | www.bt-laboratory.com