

## CPNS2 Polyclonal Antibody

### Description

<b>Product type</b>	Primary Antibody
<b>Code</b>	BT-AP08064
<b>Host</b>	Rabbit
<b>Isotype</b>	IgG
<b>Size</b>	20ul, 50ul, 100ul
<b>Immunogen</b>	Synthesized peptide derived from part region of human protein
<b>Mol wt</b>	N/A
<b>Species reactivity</b>	Human, Mouse
<b>Clonality</b>	Polyclonal
<b>Recommended application</b>	WB, ELISA
<b>Concentration</b>	1 mg/ml
<b>Full name</b>	Calpain small subunit 2
<b>Synonyms</b>	Calpain small subunit 2 ;CSS2;Calcium-dependent protease small subunit 2

**This product is for research use only, not for use in human, therapeutic or diagnostic procedure.**

### Background

Calcium-regulated non-lysosomal thiol-protease which catalyzes limited proteolysis of substrates involved in cytoskeletal remodeling and signal transduction. This small subunit may act as a tissue-specific chaperone of the large subunit, possibly by helping it fold into its correct conformation for activity. Contains 4 EF-hand domains. subcellular location: Translocates to the plasma membrane upon calcium binding. subunit: Heterodimer of a large (catalytic) and a small (regulatory) subunit.

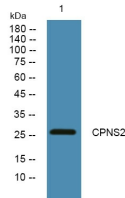
### Recommended Dilution

WB: 1: 500 - 1: 2000

ELISA: 1: 5000 - 1: 20000

Not yet tested in other applications.

### Images



Western blot analysis of lysates from Jarkat cells, primary antibody was diluted at 1:1000, 4°C overnight

### Storage

-20°C for 1 year