

RXR Gamma Polyclonal Antibody

Description

| | |
|--------------------------------|---|
| Product type | Primary Antibody |
| Code | BT-AP08067 |
| Host | Rabbit |
| Isotype | IgG |
| Size | 20ul, 50ul, 100ul |
| Immunogen | The antiserum was produced against synthesized peptide derived from human Retinoid X Receptor gamma. AA range:171-220 |
| Mol wt | 50871 |
| Species reactivity | Human, Mouse |
| Clonality | Polyclonal |
| Recommended application | WB, IHC-p, IF, ELISA |
| Concentration | 1 mg/ml |
| Full name | RXRgamma Antibody |
| Synonyms | RXRG; NR2B3; Retinoic acid receptor RXR-gamma; Nuclear receptor subfamily 2 group B member 3; Retinoid X receptor gamma |

This product is for research use only, not for use in human, therapeutic or diagnostic procedure.

Background

RXRG encodes a member of the retinoid X receptor (RXR) family of nuclear receptors which are involved in mediating the antiproliferative effects of retinoic acid (RA). This receptor forms dimers with the retinoic acid, thyroid hormone, and vitamin D receptors, increasing both DNA binding and transcriptional function on their respective response elements. This gene is expressed at significantly lower levels in non-small cell lung cancer cells. Alternatively spliced transcript variants have been described.

Recommended Dilution

WB: 1: 500 - 1: 2000

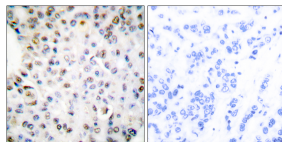
IHC: 1: 100 - 1: 300

IF: 1: 200 - 1: 1000

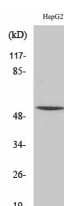
ELISA: 1: 10000

Not yet tested in other applications.

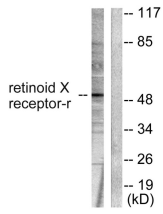
Images



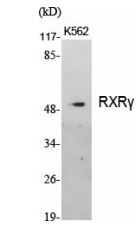
Immunohistochemistry analysis of paraffin-embedded human breast carcinoma tissue, using Retinoid X Receptor gamma Antibody. The picture on the right is blocked with the synthesized peptide.



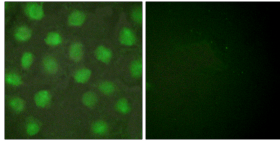
Western Blot analysis of HepG2 cells using RXR γ Polyclonal Antibody cells nucleus.



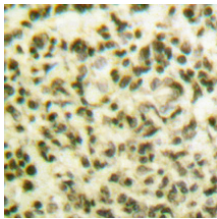
Western blot analysis of lysates from HepG2 cells, using Retinoid X Receptor gamma Antibody. The lane on the right is blocked with the synthesized peptide.



Western Blot analysis of various cells using RXR γ Polyclonal Antibody cells nucleus.



Immunofluorescence analysis of HUVEC cells, using Retinoid X Receptor gamma Antibody. The picture on the right is blocked with the synthesized peptide.



Immunohistochemical analysis of paraffin-embedded Human lung cancer. Antibody was diluted at 1:100(4 $^{\circ}$ overnight). High-pressure and temperature Tris-EDTA,pH8.0 was used for antigen retrieval.

Storage

-20 $^{\circ}$ C for one year

501 Changsheng S Rd, Nanhu Dist, Jiaxing, Zhejiang, China

Tel: 86 21 31007137 | E-mail: save@bt-laboratory.com | www.bt-laboratory.com