

RyR-2 Polyclonal Antibody

Description

Product type	Primary Antibody
Code	BT-AP08069
Host	Rabbit
Isotype	IgG
Size	20ul, 50ul, 100ul
Immunogen	The antiserum was produced against synthesized peptide derived from human RyR2. AA range:2774-2823
Mol wt	564498
Species reactivity	Human, Mouse, Rat
Clonality	Polyclonal
Recommended application	WB, IHC-p, IF, ELISA
Concentration	1 mg/ml
Full name	RyR-2 Antibody
Synonyms	RYR2; Ryanodine receptor 2; RYR-2; RyR2; hRYR-2; Cardiac muscle ryanodine receptor; Cardiac muscle ryanodine receptor-calcium release channel; Type 2 ryanodine receptor

This product is for research use only, not for use in human, therapeutic or diagnostic procedure.

Background

RYR2 (ryanodine receptor 2) encodes a ryanodine receptor found in cardiac muscle sarcoplasmic reticulum. The encoded protein is one of the components of a calcium channel, composed of a tetramer of the ryanodine receptor proteins and a tetramer of FK506 binding protein 1B proteins, that supplies calcium to cardiac muscle. Mutations in RYR2 are associated with stress-induced polymorphic ventricular tachycardia and arrhythmogenic right ventricular dysplasia.

Recommended Dilution

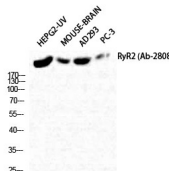
IHC: 1: 100 - 1: 300

IF: 1: 200 - 1: 1000

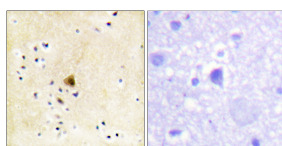
ELISA: 1: 5000

Not yet tested in other applications.

Images



Western Blot analysis of HepG2-UV MOUSE-BRAIN AD293 PC-3 cells using RyR-2 Polyclonal Antibody diluted at 1:2000



Immunohistochemistry analysis of paraffin-embedded human brain tissue, using RyR2 Antibody. The picture on the right is blocked with the synthesized peptide.

Storage

-20°C for one year

501 Changsheng S Rd, Nanhu Dist, Jiaxing, Zhejiang, China

Tel: 86 21 31007137 | E-mail: save@bt-laboratory.com | www.bt-laboratory.com