

S-100A3 Polyclonal Antibody

Description

Product type	Primary Antibody
Code	BT-AP08076
Host	Rabbit
Isotype	IgG
Size	20ul, 50ul, 100ul
Immunogen	The antiserum was produced against synthesized peptide derived from human S100A3. AA range:26-75
Mol wt	11713
Species reactivity	Human, Mouse, Rat
Clonality	Polyclonal
Recommended application	IHC-p, ELISA
Concentration	1 mg/ml
Full name	S-100A3 Antibody
Synonyms	S100A3; S100E; Protein S100-A3; Protein S-100E; S100 calcium-binding protein A3

This product is for research use only, not for use in human, therapeutic or diagnostic procedure.

Background

The protein encoded by S100A3 (S100 calcium binding protein A3) is a member of the S100 family of proteins containing 2 EF-hand calcium-binding motifs. S100 proteins are localized in the cytoplasm and/or nucleus of a wide range of cells, and involved in the regulation of a number of cellular processes such as cell cycle progression and differentiation. S100 genes include at least 13 members which are located as a cluster on chromosome 1q21. This protein has the highest content of cysteines of all S100 proteins, has a high affinity for Zinc, and is highly expressed in human hair cuticle. The precise function of this protein is unknown.

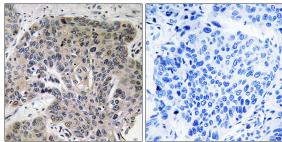
Recommended Dilution

IHC: 1: 100 - 1: 300

ELISA: 1: 40000

Not yet tested in other applications.

Images



Immunohistochemistry analysis of paraffin-embedded human lung carcinoma tissue, using S100A3 Antibody. The picture on the right is blocked with the synthesized peptide.

Storage

-20°C for one year