

S-100A5 Polyclonal Antibody

Description

Product type	Primary Antibody
Code	BT-AP08077
Host	Rabbit
Isotype	IgG
Size	20ul, 50ul, 100ul
Immunogen	The antiserum was produced against synthesized peptide derived from human S100A5. AA range:34-83
Mol wt	10744
Species reactivity	Human, Mouse, Rat
Clonality	Polyclonal
Recommended application	WB, ELISA
Concentration	1 mg/ml
Full name	S-100A5 Antibody
Synonyms	S100A5; S100D; Protein S100-A5; Protein S-100D; S100 calcium-binding protein A5

This product is for research use only, not for use in human, therapeutic or diagnostic procedure.

Background

The protein encoded by S100A5 (S100 calcium binding protein A5) is a member of the S100 family of proteins containing 2 EF-hand calcium-binding motifs. S100 proteins are localized in the cytoplasm and/or nucleus of a wide range of cells, and involved in the regulation of a number of cellular processes such as cell cycle progression and differentiation. S100 genes include at least 13 members which are located as a cluster on chromosome 1q21. This protein has a Ca²⁺ affinity 20- to 100-fold higher than the other S100 proteins studied under identical conditions. This protein also binds Zn²⁺ and Cu²⁺, and Cu²⁺ strongly which impairs the binding of Ca²⁺. This protein is expressed in very restricted regions of the adult brain.

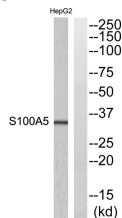
Recommended Dilution

WB: 1: 500 - 1: 2000

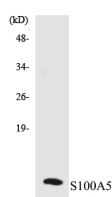
ELISA: 1: 20000

Not yet tested in other applications.

Images



Western blot analysis of S100A5 Antibody. The lane on the right is blocked with the S100A5 peptide.



Western blot analysis of the lysates from K562 cells using S100A5 antibody.

Storage

-20°C for one year

501 Changsheng S Rd, Nanhu Dist, Jiaxing, Zhejiang, China

Tel: 86 21 31007137 | E-mail: save@bt-laboratory.com | www.bt-laboratory.com