

S-100A7L2 Polyclonal Antibody

Description

| | |
|--------------------------------|--|
| Product type | Primary Antibody |
| Code | BT-AP08078 |
| Host | Rabbit |
| Isotype | IgG |
| Size | 20ul, 50ul, 100ul |
| Immunogen | The antiserum was produced against synthesized peptide derived from human S100A7L2. AA range:38-87 |
| Mol wt | 11302 |
| Species reactivity | Human |
| Clonality | Polyclonal |
| Recommended application | WB, ELISA |
| Concentration | 1 mg/ml |
| Full name | S-100A7L2 Antibody |
| Synonyms | S100A7L2; S100A7B; Protein S100-A7-like 2; S100 calcium-binding protein A7-like 2 |

This product is for research use only, not for use in human, therapeutic or diagnostic procedure.

Background

S100A7L2 (S100 Calcium Binding Protein A7 Like 2) is a Protein Coding gene. GO annotations related to this gene include calcium ion binding. An important paralog of this gene is S100A7A.

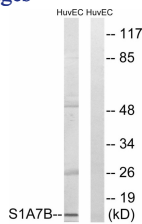
Recommended Dilution

WB: 1: 500 - 1: 2000

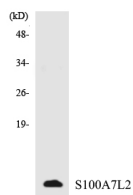
ELISA: 1: 10000

Not yet tested in other applications.

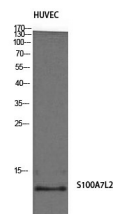
Images



Western blot analysis of lysates from HUVEC cells, using S100A7L2 Antibody. The lane on the right is blocked with the synthesized peptide.



Western blot analysis of the lysates from HepG2 cells using S100A7L2 antibody.



Western Blot analysis of HuvEc cells using S-100A7L2 Polyclonal Antibody

Storage

-20°C for one year

501 Changsheng S Rd, Nanhu Dist, Jiaxing, Zhejiang, China

Tel: 86 21 31007137 | E-mail: save@bt-laboratory.com | www.bt-laboratory.com