

S-100Z Polyclonal Antibody

Description

Product type	Primary Antibody
Code	BT-AP08080
Host	Rabbit
Isotype	IgG
Size	20ul, 50ul, 100ul
Immunogen	The antiserum was produced against synthesized peptide derived from human S100Z. AA range:2-51
Mol wt	11562
Species reactivity	Human
Clonality	Polyclonal
Recommended application	WB, IHC-p, ELISA
Concentration	1 mg/ml
Full name	S-100Z Antibody
Synonyms	S100Z; Protein S100-Z; S100 calcium-binding protein Z

This product is for research use only, not for use in human, therapeutic or diagnostic procedure.

Background

Members of the S100 protein family contain 2 calcium-binding EF-hands and exhibit cell-type specific expression patterns. For additional background information on S100 proteins, see MIM 114085.

Recommended Dilution

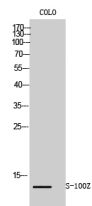
WB: 1: 500 - 1: 2000

IHC: 1: 100 - 1: 300

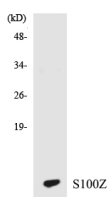
ELISA: 1: 20000

Not yet tested in other applications.

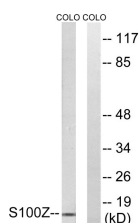
Images



Western Blot analysis of COLO cells using S-100Z Polyclonal Antibody



Western blot analysis of the lysates from HT-29 cells using S100Z antibody.



Western blot analysis of lysates from COLO cells, using S100Z Antibody. The lane on the right is blocked with the synthesized peptide.

Storage

-20°C for one year

501 Changsheng S Rd, Nanhu Dist, Jiaxing, Zhejiang, China

Tel: 86 21 31007137 | E-mail: save@bt-laboratory.com | www.bt-laboratory.com