

S2P Polyclonal Antibody

Description

Product type	Primary Antibody
Code	BT-AP08099
Host	Rabbit
Isotype	IgG
Size	20ul, 50ul, 100ul
Immunogen	The antiserum was produced against synthesized peptide derived from human MBTPS2. AA range:301-350
Mol wt	57444
Species reactivity	Human, Mouse, Rat
Clonality	Polyclonal
Recommended application	IF, ELISA
Concentration	1 mg/ml
Full name	S2P Antibody
Synonyms	MBTPS2; S2P; Membrane-bound transcription factor site-2 protease; Endopeptidase S2P; Sterol regulatory element-binding proteins intramembrane protease; SREBPs intramembrane protease

This product is for research use only, not for use in human, therapeutic or diagnostic procedure.

Background

MBTPS2 (membrane bound transcription factor peptidase, site 2) encodes a intramembrane zinc metalloprotease, which is essential in development. This protease functions in the signal protein activation involved in sterol control of transcription and the ER stress response. Mutations in MBTPS2 have been associated with ichthyosis follicularis with atrichia and photophobia (IFAP syndrome); IFAP syndrome has been quantitatively linked to a reduction in cholesterol homeostasis and ER stress response.

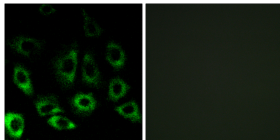
Recommended Dilution

IF: 1: 200 - 1: 1000

ELISA: 1: 20000

Not yet tested in other applications.

Images



Immunofluorescence analysis of A549 cells, using MBTPS2 Antibody. The picture on the right is blocked with the synthesized peptide.

Storage

-20°C for one year