

Cripto-3 Polyclonal Antibody

Description

Product type	Primary Antibody
Code	BT-AP08105
Host	Rabbit
Isotype	IgG
Size	20ul, 50ul, 100ul
Immunogen	The antiserum was produced against synthesized peptide derived from the Internal region of human TDGF1P3. AA range:1-50
Mol wt	21181
Species reactivity	Human, Rat, Mouse
Clonality	Polyclonal
Recommended application	WB, ELISA
Concentration	1 mg/ml
Full name	Putative teratocarcinoma-derived growth factor 3
Synonyms	Putative teratocarcinoma-derived growth factor 3; TDGF1P3; CRIPTO3; TDGF2; TDGF3; Putative teratocarcinoma-derived growth factor 3; Cripto-3 growth factor; Epidermal growth factor-like cripto protein CR3; Teratocarcinoma-derived growth factor 1 pseudogene 3

This product is for research use only, not for use in human, therapeutic or diagnostic procedure.

Background

The TDGF3 locus has characteristics of a retrotransposon, including lack of introns and a poly(A) sequence.

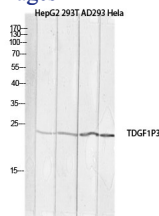
Recommended Dilution

WB: 1: 500 - 1: 2000

ELISA: 1: 10000

Not yet tested in other applications.

Images



Western blot analysis of HepG2 293T AD293 Hela lysis using TDGF1P3 antibody. Antibody was diluted at 1:1000. Secondary antibody was diluted at 1:20000

Storage

-20°C for 1 year