

CRIS2 Polyclonal Antibody

Description

Product type	Primary Antibody
Code	BT-AP08106
Host	Rabbit
Isotype	IgG
Size	20ul, 50ul, 100ul
Immunogen	Synthesized peptide derived from human protein . at AA range: 30-110
Mol wt	N/A
Species reactivity	Human, Mouse
Clonality	Polyclonal
Recommended application	WB, ELISA
Concentration	1 mg/ml
Full name	Cysteine-rich secretory protein 2
Synonyms	Cysteine-rich secretory protein 2 ;CRISP-2;Cancer/testis antigen 36;CT36;Testis-specific protein TPX-1

This product is for research use only, not for use in human, therapeutic or diagnostic procedure.

Background

May regulate some ion channels' activity and thereby regulate calcium fluxes during sperm capacitation.,Belongs to the CRISP family.,tissue specificity:Testis and epididymis.,

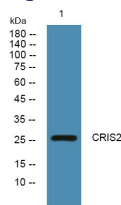
Recommended Dilution

WB: 1: 500 - 1: 2000

ELISA: 1: 5000 - 1: 20000

Not yet tested in other applications.

Images



Western blot analysis of lysates from K562 cells, primary antibody was diluted at 1:1000, 4°C overnight

Storage

-20°C for 1 year