

SAA4 Polyclonal Antibody

Description

Product type	Primary Antibody
Code	BT-AP08114
Host	Rabbit
Isotype	IgG
Size	20ul, 50ul, 100ul
Immunogen	The antiserum was produced against synthesized peptide derived from human SAA4. AA range:81-130
Mol wt	14807
Species reactivity	Human
Clonality	Polyclonal
Recommended application	IHC-p, ELISA
Concentration	1 mg/ml
Full name	SAA4 Antibody
Synonyms	SAA4; CSAA; Serum amyloid A-4 protein; Constitutively expressed serum amyloid A protein; C-SAA

This product is for research use only, not for use in human, therapeutic or diagnostic procedure.

Background

SAA4 (Serum Amyloid A4, Constitutive) is a Protein Coding gene. Diseases associated with SAA4 include amyloidosis aa and amyloidosis. Among its related pathways are Folate Metabolism and Selenium Pathway. GO annotations related to this gene include chemoattractant activity. An important paralog of this gene is SAA2.

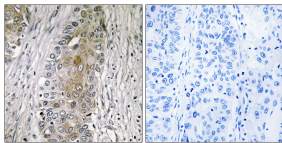
Recommended Dilution

IHC: 1: 100 - 1: 300

ELISA: 1: 40000

Not yet tested in other applications.

Images



Immunohistochemistry analysis of paraffin-embedded human lung carcinoma, using SAA4 Antibody. The picture on the right is blocked with the synthesized peptide.

Storage

-20°C for one year

501 Changsheng S Rd, Nanhu Dist, Jiaxing, Zhejiang, China

Tel: 86 21 31007137 | E-mail: save@bt-laboratory.com | www.bt-laboratory.com