

Sam 68 Polyclonal Antibody

Description

Product type	Primary Antibody
Code	BT-AP08121
Host	Rabbit
Isotype	IgG
Size	20ul, 50ul, 100ul
Immunogen	The antiserum was produced against synthesized peptide derived from human Sam 68. AA range:96-145
Mol wt	48227
Species reactivity	Human, Mouse, Rat
Clonality	Polyclonal
Recommended application	WB, ELISA
Concentration	1 mg/ml
Full name	Sam 68 Antibody
Synonyms	KHDRBS1; SAM68; KH domain-containing; RNA-binding, signal transduction-associated protein 1; GAP-associated tyrosine phosphoprotein p62; Src-associated in mitosis 68 kDa protein; Sam68; p21 Ras GTPas

This product is for research use only, not for use in human, therapeutic or diagnostic procedure.

Background

KHDRBS1 encodes a member of the K homology domain-containing, RNA-binding, signal transduction-associated protein family. The KH domain-containing RNA-binding signal transduction-associated protein 1 appears to have many functions and may be involved in a variety of cellular processes, including alternative splicing, cell cycle regulation, RNA 3'-end formation, tumorigenesis, and regulation of human immunodeficiency virus gene expression. Alternative splicing results in multiple transcript variants.

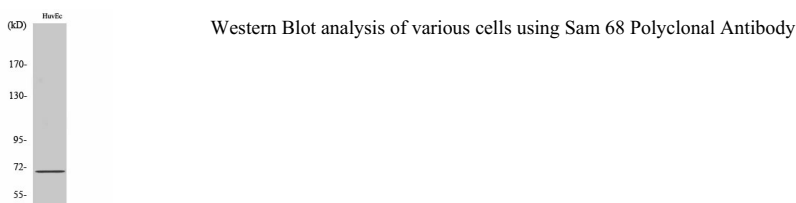
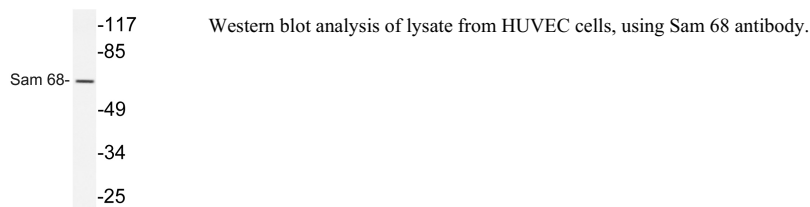
Recommended Dilution

WB: 1: 500 - 1: 2000

ELISA: 1: 10000

Not yet tested in other applications.

Images



Storage

-20°C for one year

501 Changsheng S Rd, Nanhu Dist, Jiaxing, Zhejiang, China

Tel: 86 21 31007137 | E-mail: save@bt-laboratory.com | www.bt-laboratory.com