

SAMHD1 Polyclonal Antibody

Description

Product type	Primary Antibody
Code	BT-AP08122
Host	Rabbit
Isotype	IgG
Size	20ul, 50ul, 100ul
Immunogen	The antiserum was produced against synthesized peptide derived from the Internal region of human SAMHD1. AA range:431-480
Mol wt	72201
Species reactivity	Human
Clonality	Polyclonal
Recommended application	WB, IHC-p, ELISA
Concentration	1 mg/ml
Full name	SAMHD1 Antibody
Synonyms	SAMHD1; MOP5; SAM domain and HD domain-containing protein 1; Dendritic cell-derived IFNG-induced protein; DCIP; Monocyte protein 5; MOP-5

This product is for research use only, not for use in human, therapeutic or diagnostic procedure.

Background

SAMHD1 may play a role in regulation of the innate immune response. The SAM and HD domain containing deoxynucleoside triphosphate triphosphohydrolase 1 is upregulated in response to viral infection and may be involved in mediation of tumor necrosis factor-alpha proinflammatory responses. Mutations in this gene have been associated with Aicardi-Goutieres syndrome.

Recommended Dilution

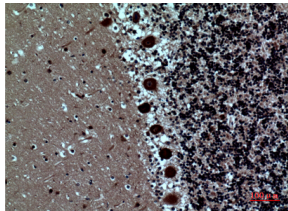
WB: 1: 500 - 1: 2000

IHC-p: 1: 100 - 1: 300

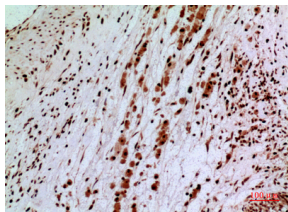
ELISA: 1: 20000

Not yet tested in other applications.

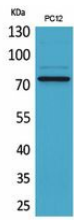
Images



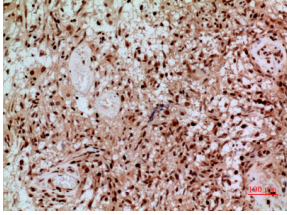
Immunohistochemical analysis of paraffin-embedded human-brain, antibody was diluted at 1:100



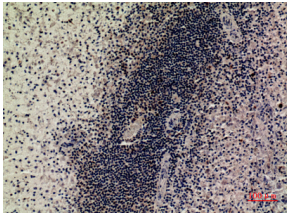
Immunohistochemical analysis of paraffin-embedded human-brain, antibody was diluted at 1:100



Western Blot analysis of PC12 cells using SAMHD1 Polyclonal Antibody. Secondary antibody was diluted at 1:20000 cells nucleus.



Immunohistochemical analysis of paraffin-embedded human-brain, antibody was diluted at 1:100



Immunohistochemical analysis of paraffin-embedded human-spleen, antibody was diluted at 1:100

Storage

-20°C for one year

501 Changsheng S Rd, Nanhu Dist, Jiaxing, Zhejiang, China

Tel: 86 21 31007137 | E-mail: save@bt-laboratory.com | www.bt-laboratory.com