

## SAP 155 Polyclonal Antibody

### Description

|                                |  |
|--------------------------------|--|
| <b>Product type</b>            | Primary Antibody   |
| <b>Code</b>                    | BT-AP08124   |
| <b>Host</b>                    | Rabbit   |
| <b>Isotype</b>                 | IgG  |
| <b>Size</b>                    | 20ul, 50ul, 100ul  |
| <b>Immunogen</b>               | The antiserum was produced against synthesized peptide derived from human SAP 155. AA range:75-124   |
| <b>Mol wt</b>                  | 145830   |
| <b>Species reactivity</b>      | Human, Mouse   |
| <b>Clonality</b>               | Polyclonal   |
| <b>Recommended application</b> | WB, ELISA  |
| <b>Concentration</b>           | 1 mg/ml  |
| <b>Full name</b>               | SAP 155 Antibody   |
| <b>Synonyms</b>                | SF3B1; SAP155; Splicing factor 3B subunit 1; Pre-mRNA-splicing factor SF3b 155 kDa subunit; SF3b155; Spliceosome-associated protein 155; SAP 155 |

This product is for research use only, not for use in human, therapeutic or diagnostic procedure.

### Background

SF3B1 encodes subunit 1 of the splicing factor 3b protein complex. Splicing factor 3b, together with splicing factor 3a and a 12S RNA unit, forms the U2 small nuclear ribonucleoproteins complex (U2 snRNP). The splicing factor 3b/3a complex binds pre-mRNA upstream of the intron's branch site in a sequence independent manner and may anchor the U2 snRNP to the pre-mRNA. Splicing factor 3b is also a component of the minor U12-type spliceosome. The carboxy-terminal two-thirds of subunit 1 have 22 non-identical, tandem HEAT repeats that form rod-like, helical structures. Alternative splicing results in multiple transcript variants encoding different isoforms.

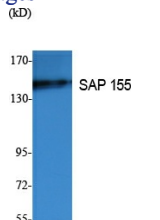
### Recommended Dilution

WB: 1: 500 - 1: 2000

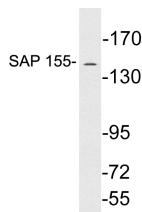
ELISA: 1: 20000

Not yet tested in other applications.

### Images



Western Blot analysis of extracts from K562 cells, using SAP 155 Polyclonal Antibody. Secondary antibody was diluted at 1:20000 cells nucleus.



Western blot analysis of lysates from Jurkat cells, using SAP 155 antibody.

## Storage

-20°C for one year

501 Changsheng S Rd, Nanhu Dist, Jiaxing, Zhejiang, China

Tel: 86 21 31007137 | E-mail: [save@bt-laboratory.com](mailto:save@bt-laboratory.com) | [www.bt-laboratory.com](http://www.bt-laboratory.com)