

Sar1B Polyclonal Antibody

Description

Product type	Primary Antibody
Code	BT-AP08130
Host	Rabbit
Isotype	IgG
Size	20ul, 50ul, 100ul
Immunogen	The antiserum was produced against synthesized peptide derived from human SAR1B. AA range:111-160
Mol wt	22410
Species reactivity	Human, Mouse, Rat
Clonality	Polyclonal
Recommended application	WB, IHC-p, ELISA
Concentration	1 mg/ml
Full name	Sar1B Antibody
Synonyms	SAR1B; SARA2; SARB; GTP-binding protein SAR1b; GTP-binding protein B; GTBPB

This product is for research use only, not for use in human, therapeutic or diagnostic procedure.

Background

The protein encoded by SAR1B (secretion associated Ras related GTPase 1B) is a small GTPase that acts as a homodimer. The encoded protein is activated by the guanine nucleotide exchange factor PREB and is involved in protein transport from the endoplasmic reticulum to the Golgi. This protein is part of the COPII coat complex. Defects in SAR1B are a cause of chylomicron retention disease (CMRD), also known as Anderson disease (ANDD). Two transcript variants encoding the same protein have been found for this gene.

Recommended Dilution

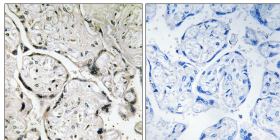
WB: 1: 500 - 1: 2000

IHC: 1: 100 - 1: 300

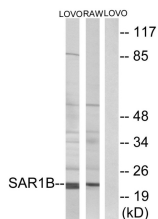
ELISA: 1: 20000

Not yet tested in other applications.

Images



Immunohistochemistry analysis of paraffin-embedded human placenta tissue, using SAR1B Antibody. The picture on the right is blocked with the synthesized peptide.



Western blot analysis of lysates from LOVO and RAW264.7 cells, using SAR1B Antibody. The lane on the right is blocked with the synthesized peptide.

Storage

-20°C for one year

501 Changsheng S Rd, Nanhu Dist, Jiaxing, Zhejiang, China

Tel: 86 21 31007137 | E-mail: save@bt-laboratory.com | www.bt-laboratory.com