

## Sarcoglycan Alpha Polyclonal Antibody

### Description

<b>Product type</b>	Primary Antibody
<b>Code</b>	BT-AP08131
<b>Host</b>	Rabbit
<b>Isotype</b>	IgG
<b>Size</b>	20ul, 50ul, 100ul
<b>Immunogen</b>	The antiserum was produced against synthesized peptide derived from human SGCA. AA range:161-210
<b>Mol wt</b>	42875
<b>Species reactivity</b>	Human, Mouse
<b>Clonality</b>	Polyclonal
<b>Recommended application</b>	WB, ELISA
<b>Concentration</b>	1 mg/ml
<b>Full name</b>	Sarcoglycan alpha Antibody
<b>Synonyms</b>	SGCA; ADL; DAG2; Alpha-sarcoglycan; Alpha-SG; 50 kDa dystrophin-associated glycoprotein; 50DAG; Adhalin; Dystroglycan-2

This product is for research use only, not for use in human, therapeutic or diagnostic procedure.

### Background

SGCA (sarcoglycan alpha) encodes a component of the dystrophin-glycoprotein complex (DGC), which is critical to the stability of muscle fiber membranes and to the linking of the actin cytoskeleton to the extracellular matrix. Its expression is thought to be restricted to striated muscle. Mutations in SGCA result in type 2D autosomal recessive limb-girdle muscular dystrophy. Multiple transcript variants encoding different isoforms have been found for SGCA.

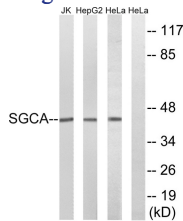
### Recommended Dilution

WB: 1: 500 - 1: 2000

ELISA: 1: 40000

Not yet tested in other applications.

### Images



Western blot analysis of lysates from HeLa, HepG2, and Jurkat cells, using SGCA Antibody. The lane on the right is blocked with the synthesized peptide.

### Storage

-20°C for one year