

## Sarcoglycan-Beta Polyclonal Antibody

### Description

<b>Product type</b>	Primary Antibody
<b>Code</b>	BT-AP08132
<b>Host</b>	Rabbit
<b>Isotype</b>	IgG
<b>Size</b>	20ul, 50ul, 100ul
<b>Immunogen</b>	The antiserum was produced against synthesized peptide derived from human Sarcoglycan-beta. AA range:87-136
<b>Mol wt</b>	34777
<b>Species reactivity</b>	Human, Mouse
<b>Clonality</b>	Polyclonal
<b>Recommended application</b>	WB, IHC-p, ELISA
<b>Concentration</b>	1 mg/ml
<b>Full name</b>	Sarcoglycan-beta Antibody
<b>Synonyms</b>	SGCB; Beta-sarcoglycan; Beta-SG; 43 kDa dystrophin-associated glycoprotein; 43DAG; A3b

This product is for research use only, not for use in human, therapeutic or diagnostic procedure.

### Background

SGCB encodes a member of the sarcoglycan family. Sarcoglycans are transmembrane components in the dystrophin-glycoprotein complex which help stabilize the muscle fiber membranes and link the muscle cytoskeleton to the extracellular matrix. Mutations in this gene have been associated with limb-girdle muscular dystrophy.

### Recommended Dilution

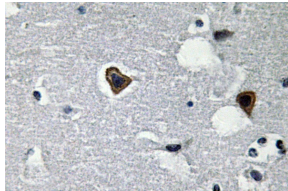
WB: 1: 500 - 1: 2000

IHC: 1: 100 - 1: 300

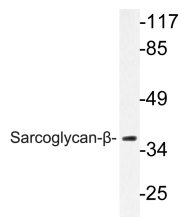
ELISA: 1: 40000

Not yet tested in other applications.

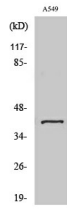
### Images



Immunohistochemistry analysis of Sarcoglycan- $\beta$  antibody in paraffin-embedded human brain tissue.



Western blot analysis of lysate from A549 cells, using Sarcoglycan- $\beta$  antibody.



## Western Blot analysis of various cells using Sarcoglycan- $\beta$ Polyclonal Antibody

### Storage

-20°C for one year

501 Changsheng S Rd, Nanhu Dist, Jiaxing, Zhejiang, China

Tel: 86 21 31007137 | E-mail: [save@bt-laboratory.com](mailto:save@bt-laboratory.com) | [www.bt-laboratory.com](http://www.bt-laboratory.com)