

Crystallin- α C Polyclonal Antibody

Description

Product type	Primary Antibody
Code	BT-AP08140
Host	Rabbit
Isotype	IgG
Size	20ul, 50ul, 100ul
Immunogen	Recombinant Protein of Crystallin- α C
Mol wt	N/A
Species reactivity	Human
Clonality	Polyclonal
Recommended application	WB
Concentration	N/A
Full name	Heat shock protein beta-8
Synonyms	Heat shock protein beta-8; HSPB8; CRYAC; E2IG1; HSP22; PP1629; Heat shock protein beta-8; HspB8; Alpha-crystallin C chain; E2-induced gene 1 protein; Protein kinase H11; Small stress protein-like protein HSP22

This product is for research use only, not for use in human, therapeutic or diagnostic procedure.

Background

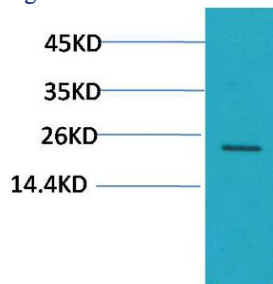
The protein encoded by this gene belongs to the superfamily of small heat-shock proteins containing a conservative alpha-crystallin domain at the C-terminal part of the molecule. The expression of this gene is induced by estrogen in estrogen receptor-positive breast cancer cells, and this protein also functions as a chaperone in association with Bag3, a stimulator of macroautophagy. Thus, this gene appears to be involved in regulation of cell proliferation, apoptosis, and carcinogenesis, and mutations in this gene have been associated with different neuromuscular diseases, including Charcot-Marie-Tooth disease.

Recommended Dilution

WB: 1: 500 - 1000

Not yet tested in other applications.

Images



Western blot analysis of HeLa using Crystallin- α C Polyclonal Antibody. Secondary antibody was diluted at 1:20000

Storage

-20°C for 1 year