

CSN1(Phospho Ser454) Polyclonal Antibody

Description

Product type	Primary Antibody
Code	BT-AP08151
Host	Rabbit
Isotype	IgG
Size	20ul, 50ul, 100ul
Immunogen	The antiserum was produced against synthesized peptide derived from human COPS1 around the phosphorylation site of Ser454. AA range:420-469
Mol wt	53372
Species reactivity	Human, Mouse, Rat
Clonality	Polyclonal
Recommended application	IHC-p, IF, ELISA
Concentration	1 mg/ml
Full name	COP9 signalosome complex subunit 1
Synonyms	COP9 signalosome complex subunit 1; GPS1; COPS1; CSN1; COP9 signalosome complex subunit 1; SGN1; Signalosome subunit 1; G protein pathway suppressor 1; GPS-1; JAB1-containing signalosome subunit 1; Protein MFH

This product is for research use only, not for use in human, therapeutic or diagnostic procedure.

Background

This gene is known to suppress G-protein and mitogen-activated signal transduction in mammalian cells. The encoded protein shares significant similarity with Arabidopsis FUS6, which is a regulator of light-mediated signal transduction in plant cells.

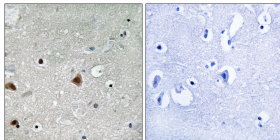
Recommended Dilution

IHC-p: 1: 100 - 1: 300

ELISA: 1: 5000

Not yet tested in other applications.

Images



Immunohistochemistry analysis of paraffin-embedded human brain, using COPS1 (Phospho-Ser454) Antibody. The picture on the right is blocked with the phospho peptide.

Storage

-20°C for 1 year

501 Changsheng S Rd, Nanhu Dist, Jiaxing, Zhejiang, China

Tel: 86 21 31007137 | E-mail: save@bt-laboratory.com | www.bt-laboratory.com