

SCCA2 Polyclonal Antibody

Description

Product type	Primary Antibody
Code	BT-AP08153
Host	Rabbit
Isotype	IgG
Size	20ul, 50ul, 100ul
Immunogen	The antiserum was produced against synthesized peptide derived from human SERPINB4. AA range:261-310
Mol wt	44854
Species reactivity	Human
Clonality	Polyclonal
Recommended application	WB, ELISA
Concentration	1 mg/ml
Full name	SCCA2 Antibody
Synonyms	SERPINB4; PI11; SCCA2; Serpin B4; Leupin; Peptidase inhibitor 11; PI-11; Squamous cell carcinoma antigen 2; SCCA-2

This product is for research use only, not for use in human, therapeutic or diagnostic procedure.

Background

May act as a protease inhibitor to modulate the host immune response against tumor cells.

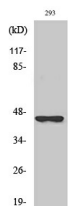
Recommended Dilution

WB: 1: 500 - 1: 2000

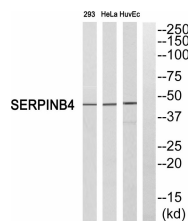
ELISA: 1: 5000

Not yet tested in other applications.

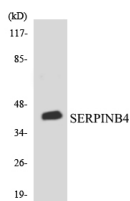
Images



Western Blot analysis of various cells using SCCA2 Polyclonal Antibody



Western blot analysis of SERPINB4 Antibody. The lane on the right is blocked with the SERPINB4 peptide.



Western blot analysis of the lysates from COLO205 cells using SERPINB4 antibody.

Storage

-20°C for one year

501 Changsheng S Rd, Nanhu Dist, Jiaxing, Zhejiang, China

Tel: 86 21 31007137 | E-mail: save@bt-laboratory.com | www.bt-laboratory.com