

Sclerostin Polyclonal Antibody

Description

Product type	Primary Antibody
Code	BT-AP08158
Host	Rabbit
Isotype	IgG
Size	20ul, 50ul, 100ul
Immunogen	Synthesized peptide derived from Sclerostin . at AA range: 130-210
Mol wt	24031
Species reactivity	Human
Clonality	Polyclonal
Recommended application	WB, ELISA
Concentration	1 mg/ml
Full name	Sclerostin Antibody
Synonyms	SOST; Sclerostin

This product is for research use only, not for use in human, therapeutic or diagnostic procedure.

Background

Sclerostin (SOST) is a secreted glycoprotein with a C-terminal cysteine knot-like (CTCK) domain and sequence similarity to the DAN (differential screening-selected gene aberrative in neuroblastoma) family of bone morphogenetic protein (BMP) antagonists. Loss-of-function mutations in SOST are associated with an autosomal-recessive disorder, sclerosteosis, which causes progressive bone overgrowth. A deletion downstream of SOST, which causes reduced sclerostin expression, is associated with a milder form of the disorder called van Buchem disease.

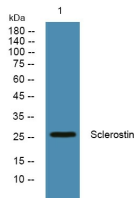
Recommended Dilution

WB: 1: 500 - 1: 2000

ELISA: 1: 20000

Not yet tested in other applications.

Images



Western blot analysis of lysates from Jarkat cells, primary antibody was diluted at 1:1000, 4°over night

Storage

-20°C for one year