

## SCML2 Polyclonal Antibody

### Description

<b>Product type</b>	Primary Antibody
<b>Code</b>	BT-AP08159
<b>Host</b>	Rabbit
<b>Isotype</b>	IgG
<b>Size</b>	20ul, 50ul, 100ul
<b>Immunogen</b>	Synthesized peptide derived from the Internal region of human SCML2.
<b>Mol wt</b>	77257
<b>Species reactivity</b>	Human
<b>Clonality</b>	Polyclonal
<b>Recommended application</b>	WB, ELISA
<b>Concentration</b>	1 mg/ml
<b>Full name</b>	SCML2 Antibody
<b>Synonyms</b>	SCML2; Sex comb on midleg-like protein 2

This product is for research use only, not for use in human, therapeutic or diagnostic procedure.

### Background

SCML2 encodes a member of the Polycomb group proteins. These proteins form the Polycomb repressive complexes which are involved in transcriptional repression. The sex comb on midleg-like 2 binds histone peptides that are monomethylated at lysine residues and may be involved in regulating homeotic gene expression during development.

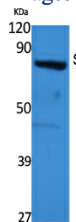
### Recommended Dilution

WB: 1: 500 - 1: 2000

ELISA: 1: 20000

Not yet tested in other applications.

### Images



Western Blot analysis of extracts from 293 cells, using SCML2 Polyclonal Antibody. Secondary antibody was diluted at 1:20000 cells nucleus.

### Storage

-20°C for one year