

CtBP1(Phospho Ser422) Polyclonal Antibody

Description

Product type	Primary Antibody
Code	BT-AP08168
Host	Rabbit
Isotype	IgG
Size	20ul, 50ul, 100ul
Immunogen	The antiserum was produced against synthesized peptide derived from human CtBP1 around the phosphorylation site of Ser422. AA range:388-437
Mol wt	47535
Species reactivity	Human, Mouse, Rat
Clonality	Polyclonal
Recommended application	WB, IHC-p, IF, ELISA
Concentration	1 mg/ml
Full name	C-terminal-binding protein 1
Synonyms	C-terminal-binding protein 1; CTBP1; CTBP; C-terminal-binding protein 1; CtBP1

This product is for research use only, not for use in human, therapeutic or diagnostic procedure.

Background

This gene encodes a protein that binds to the C-terminus of adenovirus E1A proteins. This phosphoprotein is a transcriptional repressor and may play a role during cellular proliferation. This protein and the product of a second closely related gene, CTBP2, can dimerize. Both proteins can also interact with a polycomb group protein complex which participates in regulation of gene expression during development. Alternative splicing of transcripts from this gene results in multiple transcript variants.

Recommended Dilution

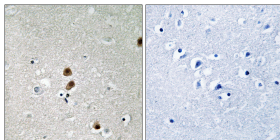
WB: 1: 500 - 1: 2000

IHC-p: 1: 100 - 1: 300

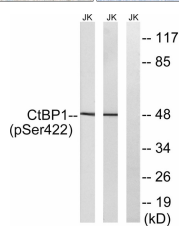
ELISA: 1: 10000

Not yet tested in other applications.

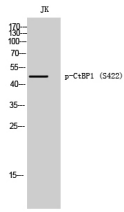
Images



Immunohistochemistry analysis of paraffin-embedded human brain, using CtBP1 (Phospho-Ser422) Antibody. The picture on the right is blocked with the phospho peptide.



Western Blot analysis of JK cells using Phospho-CtBP1 (S422) Polyclonal Antibody



Western blot analysis of lysates from Jurkat cells treated with TNF 20ng/ml 30' and Jurkat cells treated with UV 15', using CtBP1 (Phospho-Ser422) Antibody. The lane on the right is blocked with the phospho peptide.

Storage

-20°C for 1 year

501 Changsheng S Rd, Nanhu Dist, Jiaxing, Zhejiang, China

Tel: 86 21 31007137 | E-mail: save@bt-laboratory.com | www.bt-laboratory.com