

SCP-2 Polyclonal Antibody

Description

Product type	Primary Antibody
Code	BT-AP08171
Host	Rabbit
Isotype	IgG
Size	20ul, 50ul, 100ul
Immunogen	Synthesized peptide derived from the Internal region of human SCP-2.
Mol wt	175639
Species reactivity	Human
Clonality	Polyclonal
Recommended application	WB, ELISA
Concentration	1 mg/ml
Full name	SCP-2 Antibody
Synonyms	SYCP2; SCP2; Synaptonemal complex protein 2; SCP-2; Synaptonemal complex lateral element protein; hsSCP2

This product is for research use only, not for use in human, therapeutic or diagnostic procedure.

Background

The synaptonemal complex is a proteinaceous structure that links homologous chromosomes during the prophase of meiosis. Synaptonemal complex protein 2 encoded by SYCP2 is a major component of the synaptonemal complex and may bind DNA at scaffold attachment regions. The encoded protein requires synaptonemal complex protein 3, but not 1, for inclusion in the synaptonemal complex.

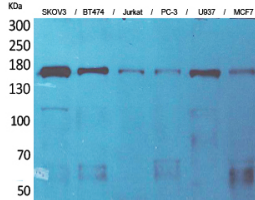
Recommended Dilution

WB: 1: 500 - 1: 2000

ELISA: 1: 20000

Not yet tested in other applications.

Images



Western Blot analysis of SKOV3, BT474, Jurkat, PC-3, U937, MCF7 cells using SCP-2 Polyclonal Antibody. Secondary antibody was diluted at 1:20000 cells nucleus.

Storage

-20°C for one year