

## SCYL1BP1 Polyclonal Antibody

### Description

<b>Product type</b>	Primary Antibody
<b>Code</b>	BT-AP08177
<b>Host</b>	Rabbit
<b>Isotype</b>	IgG
<b>Size</b>	20ul, 50ul, 100ul
<b>Immunogen</b>	The antiserum was produced against synthesized peptide derived from the N-terminal region of human GORAB. AA range:1-50
<b>Mol wt</b>	44993
<b>Species reactivity</b>	Human, Mouse, Rat
<b>Clonality</b>	Polyclonal
<b>Recommended application</b>	WB, ELISA
<b>Concentration</b>	1 mg/ml
<b>Full name</b>	SCYL1BP1 Antibody
<b>Synonyms</b>	GORAB; NTKLBP1; SCYL1BP1; RAB6-interacting golgin; N-terminal kinase-like-binding protein 1; NTKL-BP1; NTKL-binding protein 1; hNTKL-BP1; SCY1-like 1-binding protein 1; SCYL1-BP1; SCYL1-binding protei

This product is for research use only, not for use in human, therapeutic or diagnostic procedure.

### Background

GORAB encodes a member of the golgin family, a group of coiled-coil proteins localized to the Golgi. The RAB6-interacting golgin may function in the secretory pathway. The encoded protein, which also localizes to the cytoplasm, was identified by interactions with the N-terminal kinase-like protein, and thus it may function in mitosis. Mutations in this gene have been associated with geroderma osteodysplastica. Alternatively spliced transcript variants have been described.

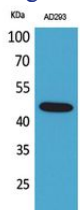
### Recommended Dilution

WB: 1: 500 - 1: 2000

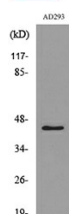
ELISA: 1: 20000

Not yet tested in other applications.

### Images



Western Blot analysis of AD293 cells using SCYL1BP1 Polyclonal Antibody. Secondary antibody was diluted at 1:20000



Western blot analysis of lysate from AD293 cells, using GORAB Antibody.

## Storage

-20°C for one year

501 Changsheng S Rd, Nanhu Dist, Jiaxing, Zhejiang, China

Tel: 86 21 31007137 | E-mail: [save@bt-laboratory.com](mailto:save@bt-laboratory.com) | [www.bt-laboratory.com](http://www.bt-laboratory.com)