

SDHB Polyclonal Antibody

Description

Product type	Primary Antibody
Code	BT-AP08181
Host	Rabbit
Isotype	IgG
Size	20ul, 50ul, 100ul
Immunogen	The antiserum was produced against synthesized peptide derived from the Internal region of human SDHB. AA range:131-180
Mol wt	31630
Species reactivity	Human, Mouse, Rat
Clonality	Polyclonal
Recommended application	WB, IHC-p, ELISA
Concentration	1 mg/ml
Full name	SDHB Antibody
Synonyms	SDHB; SDH; SDH1; Succinate dehydrogenase [ubiquinone] iron-sulfur subunit, mitochondrial; Iron-sulfur subunit of complex II; Ip

This product is for research use only, not for use in human, therapeutic or diagnostic procedure.

Background

Complex II of the respiratory chain, which is specifically involved in the oxidation of succinate, carries electrons from FADH to CoQ. The complex is composed of four nuclear-encoded subunits and is localized in the mitochondrial inner membrane. The iron-sulfur subunit is highly conserved and contains three cysteine-rich clusters which may comprise the iron-sulfur centers of the enzyme. Sporadic and familial mutations in this gene result in paragangliomas and pheochromocytoma, and support a link between mitochondrial dysfunction and tumorigenesis.

Recommended Dilution

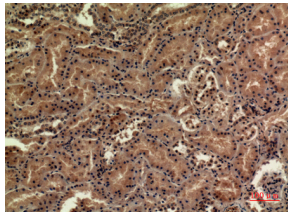
WB: 1: 500 - 1: 2000

IHC-p: 1: 100 - 1: 300

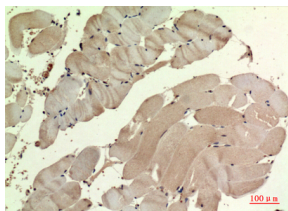
ELISA: 1: 20000

Not yet tested in other applications.

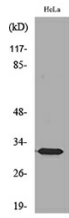
Images



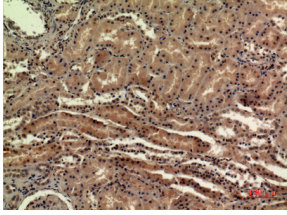
Immunohistochemical analysis of paraffin-embedded human-kidney, antibody was diluted at 1:100



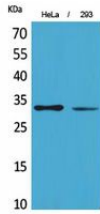
Immunohistochemical analysis of paraffin-embedded human-muscle, antibody was diluted at 1:100



Western blot analysis of lysate from HeLa cells, using SDHB Antibody.



Immunohistochemical analysis of paraffin-embedded human kidney, antibody was diluted at 1:100



Western Blot analysis of HeLa, 293 cells using SDHB Polyclonal Antibody. Secondary antibody was diluted at 1:20000

Storage

-20°C for one year

501 Changsheng S Rd, Nanhu Dist, Jiaxing, Zhejiang, China

Tel: 86 21 31007137 | E-mail: save@bt-laboratory.com | www.bt-laboratory.com