

Sds22 Polyclonal Antibody

Description

Product type	Primary Antibody
Code	BT-AP08182
Host	Rabbit
Isotype	IgG
Size	20ul, 50ul, 100ul
Immunogen	The antiserum was produced against synthesized peptide derived from human PPP1R7. AA range:136-185
Mol wt	41564
Species reactivity	Human
Clonality	Polyclonal
Recommended application	WB, ELISA
Concentration	1 mg/ml
Full name	Sds22 Antibody
Synonyms	PPP1R7; SDS22; Protein phosphatase 1 regulatory subunit 7; Protein phosphatase 1 regulatory subunit 22

This product is for research use only, not for use in human, therapeutic or diagnostic procedure.

Background

PPP1R7 (protein phosphatase 1 regulatory subunit 7) encodes a protein subunit that regulates the activity of the serine/threonine phosphatase, protein phosphatase-1. The encoded protein is required for completion of the mitotic cycle and for targeting protein phosphatase-1 to mitotic kinetochores. Alternate splicing results in multiple transcript variants.

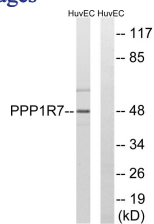
Recommended Dilution

WB: 1: 500 - 1: 2000

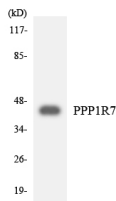
ELISA: 1: 10000

Not yet tested in other applications.

Images



Western blot analysis of lysates from HUVEC cells, using PPP1R7 Antibody. The lane on the right is blocked with the synthesized peptide.



Western blot analysis of the lysates from 293 cells using PPP1R7 antibody.

Storage

-20°C for one year

