

SEC22B Polyclonal Antibody

Description

Product type	Primary Antibody
Code	BT-AP08185
Host	Rabbit
Isotype	IgG
Size	20ul, 50ul, 100ul
Immunogen	Synthesized peptide derived from the Internal region of human SEC22B.
Mol wt	24741
Species reactivity	Human, Mouse, Rat
Clonality	Polyclonal
Recommended application	WB, IHC-p, ELISA
Concentration	1 mg/ml
Full name	SEC22B Antibody
Synonyms	SEC22B; SEC22L1; Vesicle-trafficking protein SEC22b; ER-Golgi SNARE of 24 kDa; ERS-24; ERS24; SEC22 vesicle-trafficking protein homolog B; SEC22 vesicle-trafficking protein-like 1

This product is for research use only, not for use in human, therapeutic or diagnostic procedure.

Background

The protein encoded by SEC22B (SEC22 homolog B, vesicle trafficking protein (gene/pseudogene)) is a member of the SEC22 family of vesicle trafficking proteins. It seems to complex with SNARE and it is thought to play a role in the ER-Golgi protein trafficking. This protein has strong similarity to Mus musculus and Cricetulus griseus proteins.

Recommended Dilution

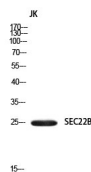
WB: 1: 500 - 1: 2000

IHC-p: 1: 100 - 1: 300

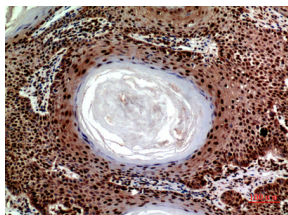
ELISA: 1: 10000

Not yet tested in other applications.

Images



Western blot analysis of JK using SEC22B antibody. Secondary antibody was diluted at 1:20000



Immunohistochemical analysis of paraffin-embedded human-skin, antibody was diluted at 1:100

Storage

-20°C for one year

501 Changsheng S Rd, Nanhu Dist, Jiaxing, Zhejiang, China

Tel: 86 21 31007137 | E-mail: save@bt-laboratory.com | www.bt-laboratory.com