

SEMA3A Polyclonal Antibody

Description

Product type	Primary Antibody
Code	BT-AP08199
Host	Rabbit
Isotype	IgG
Size	20ul, 50ul, 100ul
Immunogen	The antiserum was produced against synthesized peptide derived from human SEMA3A. AA range:688-737
Mol wt	88889
Species reactivity	Human, Mouse, Rat
Clonality	Polyclonal
Recommended application	IHC-p, ELISA
Concentration	1 mg/ml
Full name	SEMA3A Antibody
Synonyms	SEMA3A; SEMAD; Semaphorin-3A; Semaphorin III; Sema III

This product is for research use only, not for use in human, therapeutic or diagnostic procedure.

Background

SEMA3A is a member of the semaphorin family and encodes a protein with an Ig-like C2-type (immunoglobulin-like) domain, a PSI domain and a Sema domain. Semaphorin-3A can function as either a chemorepulsive agent, inhibiting axonal outgrowth, or as a chemoattractive agent, stimulating the growth of apical dendrites. In both cases, the protein is vital for normal neuronal pattern development. Increased expression of this protein is associated with schizophrenia and is seen in a variety of human tumor cell lines. Also, aberrant release of this protein is associated with the progression of Alzheimer's disease.

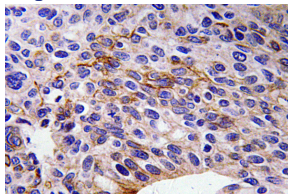
Recommended Dilution

IHC: 1: 100 - 1: 300

ELISA: 1: 40000

Not yet tested in other applications.

Images



Immunohistochemistry analysis of SEMA3A antibody in paraffin-embedded human tonsil tissue.

Storage

-20°C for one year