

SEMA3C Polyclonal Antibody

Description

Product type	Primary Antibody
Code	BT-AP08200
Host	Rabbit
Isotype	IgG
Size	20ul, 50ul, 100ul
Immunogen	The antiserum was produced against synthesized peptide derived from human SEMA3C. AA range:701-750
Mol wt	85207
Species reactivity	Human, Mouse, Rat
Clonality	Polyclonal
Recommended application	IHC-p, ELISA
Concentration	1 mg/ml
Full name	SEMA3C Antibody
Synonyms	SEMA3C; SEMAE; Semaphorin-3C; Semaphorin-E; Sema E

This product is for research use only, not for use in human, therapeutic or diagnostic procedure.

Background

SEMA3C (Semaphorin 3C) is a Protein Coding gene. Diseases associated with SEMA3C include hirschsprung disease 1 and schizophreniform disorder. Among its related pathways are Axon guidance. GO annotations related to this gene include receptor activity and semaphorin receptor binding. An important paralog of this gene is SEMA3F. inds to plexin family members and plays an important role in the regulation of developmental processes. Required for normal cardiovascular development during embryogenesis. Functions as attractant for growing axons, and thereby plays an important role in axon growth and axon guidance (By similarity).

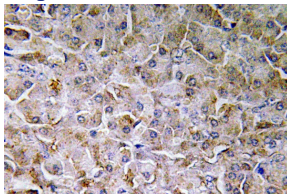
Recommended Dilution

IHC: 1: 100 - 1: 300

ELISA: 1: 40000

Not yet tested in other applications.

Images



Immunohistochemistry analysis of SEMA3C antibody in paraffin-embedded human pancreas tissue.

Storage

-20°C for one year