

SEMA3F Polyclonal Antibody

Description

Product type	Primary Antibody
Code	BT-AP08201
Host	Rabbit
Isotype	IgG
Size	20ul, 50ul, 100ul
Immunogen	The antiserum was produced against synthesized peptide derived from human SEMA3F. AA range:734-783
Mol wt	88381
Species reactivity	Human, Mouse, Rat
Clonality	Polyclonal
Recommended application	WB, ELISA
Concentration	1 mg/ml
Full name	SEMA3F Antibody
Synonyms	SEMA3F; Semaphorin-3F; Sema III/F; Semaphorin IV; Sema IV

This product is for research use only, not for use in human, therapeutic or diagnostic procedure.

Background

SEMA3F (semaphorin 3F) encodes a member of the semaphorin III family of secreted signaling proteins that are involved in axon guidance during neuronal development. The encoded protein contains an N-terminal Sema domain, an immunoglobulin loop and a C-terminal basic domain. SEMA3F is expressed by the endothelial cells where it was found to act in an autocrine fashion to induce apoptosis, inhibit cell proliferation and survival, and function as an anti-tumorigenic agent. Alternative splicing results in multiple transcript variants encoding different isoforms.

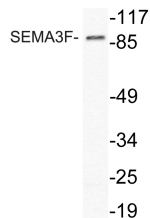
Recommended Dilution

WB: 1: 500 - 1: 2000

ELISA: 1: 10000

Not yet tested in other applications.

Images



Western blot analysis of lysate from HeLa cells, using SEMA3F antibody.

Storage

-20°C for one year