

SEMA4A Polyclonal Antibody

Description

Product type	Primary Antibody
Code	BT-AP08202
Host	Rabbit
Isotype	IgG
Size	20ul, 50ul, 100ul
Immunogen	The antiserum was produced against synthesized peptide derived from human SEMA4A. AA range:501-550
Mol wt	83574
Species reactivity	Human, Mouse, Rat, Monkey
Clonality	Polyclonal
Recommended application	WB, IHC-p, IF, ELISA
Concentration	1 mg/ml
Full name	SEMA4A Antibody
Synonyms	SEMA4A; SEMAB; SEMB; Semaphorin-4A; Semaphorin-B; Sema B

This product is for research use only, not for use in human, therapeutic or diagnostic procedure.

Background

SEMA4A encodes a member of the semaphorin family of soluble and transmembrane proteins. Semaphorins are involved in numerous functions, including axon guidance, morphogenesis, carcinogenesis, and immunomodulation. The encoded protein is a single-pass type I membrane protein containing an immunoglobulin-like C2-type domain, a PSI domain and a sema domain. It inhibits axonal extension by providing local signals to specify territories inaccessible for growing axons. It is an activator of T-cell-mediated immunity and suppresses vascular endothelial growth factor (VEGF)-mediated endothelial cell migration and proliferation in vitro and angiogenesis in vivo. Mutations in this gene are associated with retinal degenerative diseases including retinitis pigmentosa type 35 (RP35) and cone-rod dystrophy type 10 (CORD10). Multiple alternatively spliced transcript variants encoding different isoforms have been identified.

Recommended Dilution

WB: 1: 500 - 1: 2000

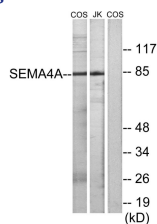
IHC: 1: 100 - 1: 300

IF: 1: 200 - 1: 1000

ELISA: 1: 20000

Not yet tested in other applications.

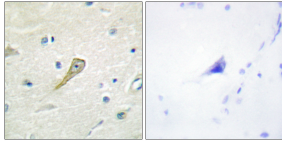
Images



Western blot analysis of lysates from COS7 and Jurkat cells, using SEMA4A Antibody. The lane on the right is blocked with the synthesized peptide.



Western Blot analysis of various cells using SEMA4A Polyclonal Antibody



Immunohistochemistry analysis of paraffin-embedded human brain tissue, using SEMA4A Antibody.
The picture on the right is blocked with the synthesized peptide.

Storage

-20°C for one year

501 Changsheng S Rd, Nanhu Dist, Jiaxing, Zhejiang, China

Tel: 86 21 31007137 | E-mail: save@bt-laboratory.com | www.bt-laboratory.com