

## SEN8 Polyclonal Antibody

### Description

<b>Product type</b>	Primary Antibody
<b>Code</b>	BT-AP08210
<b>Host</b>	Rabbit
<b>Isotype</b>	IgG
<b>Size</b>	20ul, 50ul, 100ul
<b>Immunogen</b>	The antiserum was produced against synthesized peptide derived from human SENP8. AA range:161-210
<b>Mol wt</b>	24107
<b>Species reactivity</b>	Human, Mouse, Rat
<b>Clonality</b>	Polyclonal
<b>Recommended application</b>	WB, IHC-p, ELISA
<b>Concentration</b>	1 mg/ml
<b>Full name</b>	SEN8 Antibody
<b>Synonyms</b>	SEN8; DEN1; NEDP1; PRSC2; FKSG8; Sentrin-specific protease 8; Deneddylase-1; NEDD8-specific protease 1; Protease; cysteine 2; Sentrin/SUMO-specific protease SENP8

**This product is for research use only, not for use in human, therapeutic or diagnostic procedure.**

### Background

SEN8 encodes a cysteine protease that is a member of the sentrin-specific protease family. The Sentrin-specific protease 8 is involved in processing and deconjugation of the ubiquitin-like protein termed, neural precursor cell expressed developmentally downregulated 8. Alternate splicing results in multiple transcript variants.

### Recommended Dilution

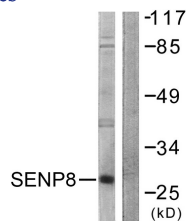
WB: 1: 500 - 1: 2000

IHC: 1: 100 - 1: 300

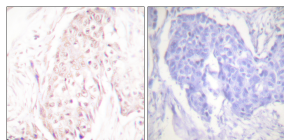
ELISA: 1: 10000

Not yet tested in other applications.

### Images



Western blot analysis of lysates from HUVEC cells, using SENP8 Antibody. The lane on the right is blocked with the synthesized peptide.



Immunohistochemistry analysis of paraffin-embedded human breast carcinoma tissue, using SENP8 Antibody. The picture on the right is blocked with the synthesized peptide.



## Western Blot analysis of various cells using SENP8 Polyclonal Antibody

### Storage

-20°C for one year

501 Changsheng S Rd, Nanhu Dist, Jiaxing, Zhejiang, China

Tel: 86 21 31007137 | E-mail: [save@bt-laboratory.com](mailto:save@bt-laboratory.com) | [www.bt-laboratory.com](http://www.bt-laboratory.com)