

COLA1 Rabbit Polyclonal Antibody

Description

Product type	Primary Antibody
Code	BT-AP08215
Host	Rabbit
Isotype	IgG
Size	20ul, 50ul, 100ul
Immunogen	Synthesized peptide derived from human COLA1
Mol wt	N/A
Species reactivity	Human, Rat, Mouse
Clonality	Polyclonal
Recommended application	WB
Concentration	1 mg/ml
Full name	COLA1
Synonyms	COLA1; Collagen alpha-1(XXI) chain

This product is for research use only, not for use in human, therapeutic or diagnostic procedure.

Background

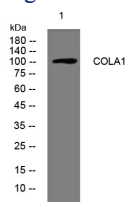
This gene encodes the alpha chain of type XXI collagen| a member of the FACIT (fibril-associated collagens with interrupted helices) collagen family. Type XXI collagen is localized to tissues containing type I collagen and maintains the integrity of the extracellular matrix. Alternative splicing results in multiple transcript variants.

Recommended Dilution

WB: 1: 500 - 1: 2000

Not yet tested in other applications.

Images



Western blot analysis of lysates from A549 cells, primary antibody was diluted at 1:1000, 4°C overnight

Storage

-20°C for 1 year

501 Changsheng S Rd, Nanhu Dist, Jiaxing, Zhejiang, China

Tel: 86 21 31007137 | E-mail: save@bt-laboratory.com | www.bt-laboratory.com