

Septin 1 Polyclonal Antibody

Description

Product type	Primary Antibody
Code	BT-AP08217
Host	Rabbit
Isotype	IgG
Size	20ul, 50ul, 100ul
Immunogen	The antiserum was produced against synthesized peptide derived from human SEPT1. AA range:181-230
Mol wt	41971
Species reactivity	Human, Mouse, Rat
Clonality	Polyclonal
Recommended application	WB, IHC-p, ELISA
Concentration	1 mg/ml
Full name	Septin 1 Antibody
Synonyms	SEPT1; DIFF6; PNUTL3; Septin-1; LARP; Peanut-like protein 3; Serologically defined breast cancer antigen NY-BR-24

This product is for research use only, not for use in human, therapeutic or diagnostic procedure.

Background

SEPT1 is a member of the septin family of GTPases. Members of this family are required for cytokinesis and the maintenance of cellular morphology. SEPT1 encodes Septin-1 that can form homo- and heterooligomeric filaments, and may contribute to the formation of neurofibrillary tangles in Alzheimer's disease. Alternatively spliced transcript variants have been found but the full-length nature of these variants has not been determined.

Recommended Dilution

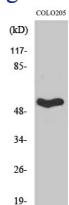
WB: 1: 500 - 1: 2000

IHC: 1: 100 - 1: 300

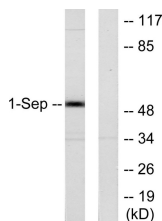
ELISA: 1: 20000

Not yet tested in other applications.

Images



Western Blot analysis of various cells using Septin 1 Polyclonal Antibody



Western blot analysis of lysates from Jurkat cells, using SEPT1 Antibody. The lane on the right is blocked with the synthesized peptide.

Storage

-20°C for one year

501 Changsheng S Rd, Nanhu Dist, Jiaxing, Zhejiang, China

Tel: 86 21 31007137 | E-mail: save@bt-laboratory.com | www.bt-laboratory.com